

1:10,000 @ A3



The drawing has been prepared for the use of AECOM's client. It may not be used, modified, reproduced or relied upon by third parties, except as agreed by AECOM or as required by law. AECOM accepts no responsibility, and denies any liability whatsoever, to any party that uses or relies on this drawing without AECOM's express written consent. Do not scale this document. All measurements must be obtained from the stated dimensions.



**LEGEND**

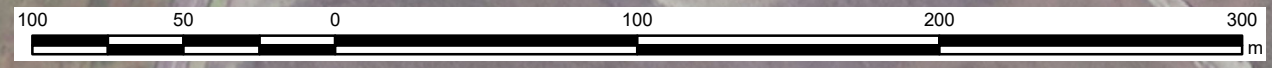
	Designated Development Site
	BL3 Buildings and artificial surfaces
	ED1 Exposed sand, gravel or till
	ED2 Spoil and bare ground
	ED3 Recolonising bare ground
	GS2 Dry meadows and grassy verges
	WS1 Scrub
	Fence
<b>Invasive Non-Native Species</b>	
	Butterfly-bush
	Winter heliotrope

**NOTES**  
 Service Layer Credits: Source: Esri, Maxar, Earthstar Geographics, and the GIS User Community.

**ISSUE PURPOSE**  
 FINAL  
**PROJECT NUMBER**  
 60687175  
**FIGURE TITLE**  
 Habitat walkover survey

**FIGURE NUMBER**  
 Figure 5

1:2,500 @ A3



This drawing has been prepared for the use of AECOM's client. It may not be used, modified, reproduced or relied upon by third parties, except as agreed by AECOM or as required by law. AECOM accepts no responsibility, and denies any liability whatsoever, to any party that uses or relies on this drawing without AECOM's express written consent. Do not scale this document. All measurements must be obtained from the stated dimensions.



**LEGEND**

- Designated Development Site
- 500m - Survey Area
- Species**
- BA Bar-tailed godwit
- BH Black-headed gull
- CA Cormorant
- CM Common gull
- CU Curlew
- DN Dunlin
- ET Little egret
- GB Great black-backed gull
- GG Great crested grebe
- GK Greenshank
- H. Grey heron
- HG Herring gull
- KF Kingfisher
- LB Lesser black-backed gull
- MA Mallard
- MU Mediterranean gull
- ND Great northern diver
- OC Oystercatcher
- RK Redshank
- SN Snipe
- Bird Flight Path**
- BH Black-headed gull
- CA Cormorant
- HG Herring gull
- LB Lesser black-backed gull
- RK Redshank
- SN Snipe

**NOTES**

Service Layer Credits: World Imagery: Maxar, Microsoft.  
 Labels show number of birds and species code.

**ISSUE PURPOSE**

FINAL

**PROJECT NUMBER**

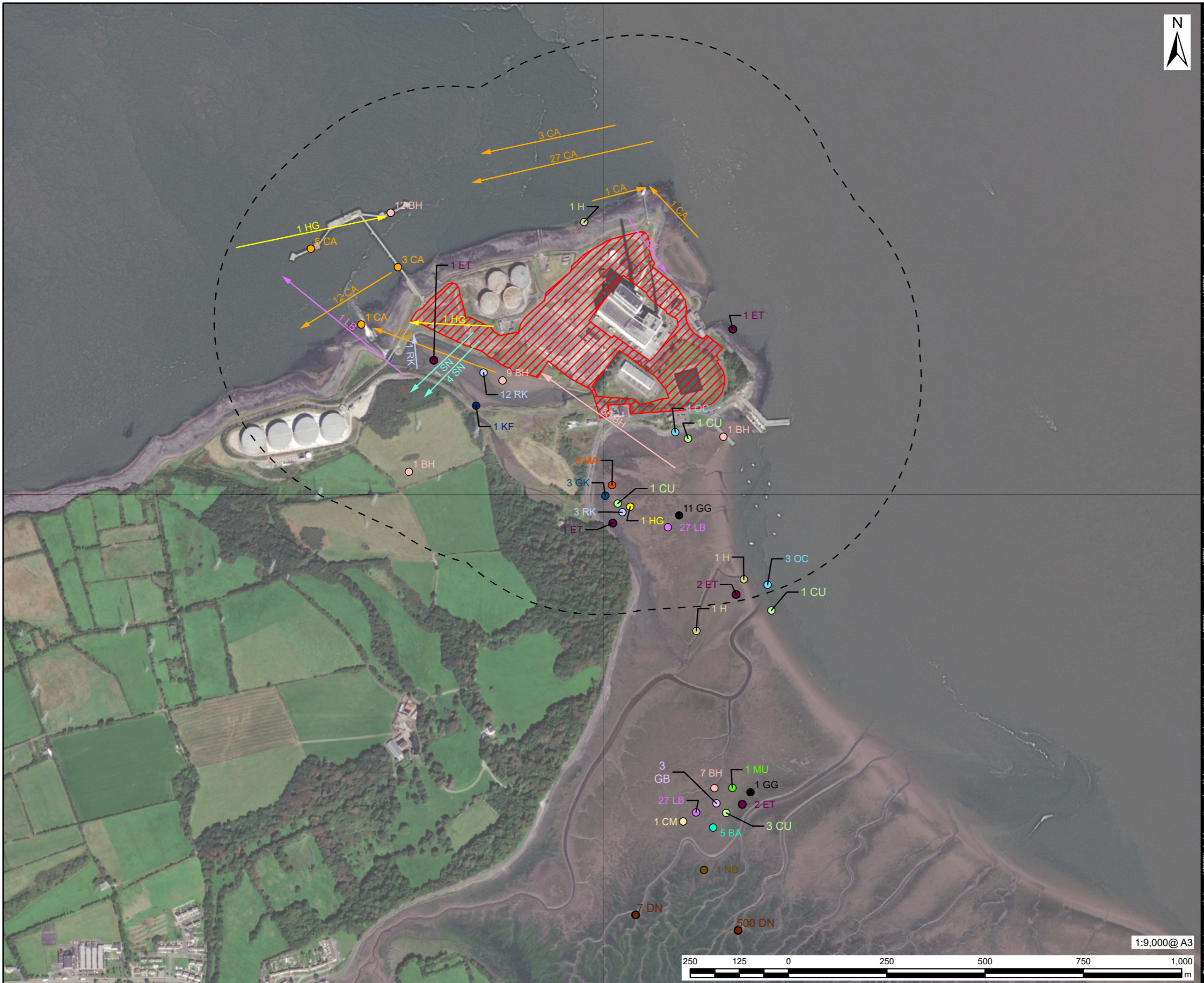
60687175

**FIGURE TITLE**

Non-breeding bird low tide survey  
 results: November 2022

**FIGURE NUMBER**

Figure 6



This drawing has been prepared for the use of AECOM's client. It may not be used, modified, reproduced or relied upon by third parties, except as agreed by AECOM or as required by law. AECOM accepts no responsibility, and denies any liability whatsoever, to any party that uses or relies on this drawing without AECOM's express written consent. Do not scale this document. All measurements must be obtained from the stated dimensions.